



CMC STEEL TEXAS  
1 STEEL MILL DRIVE  
SEGUIN TX 78155-7510

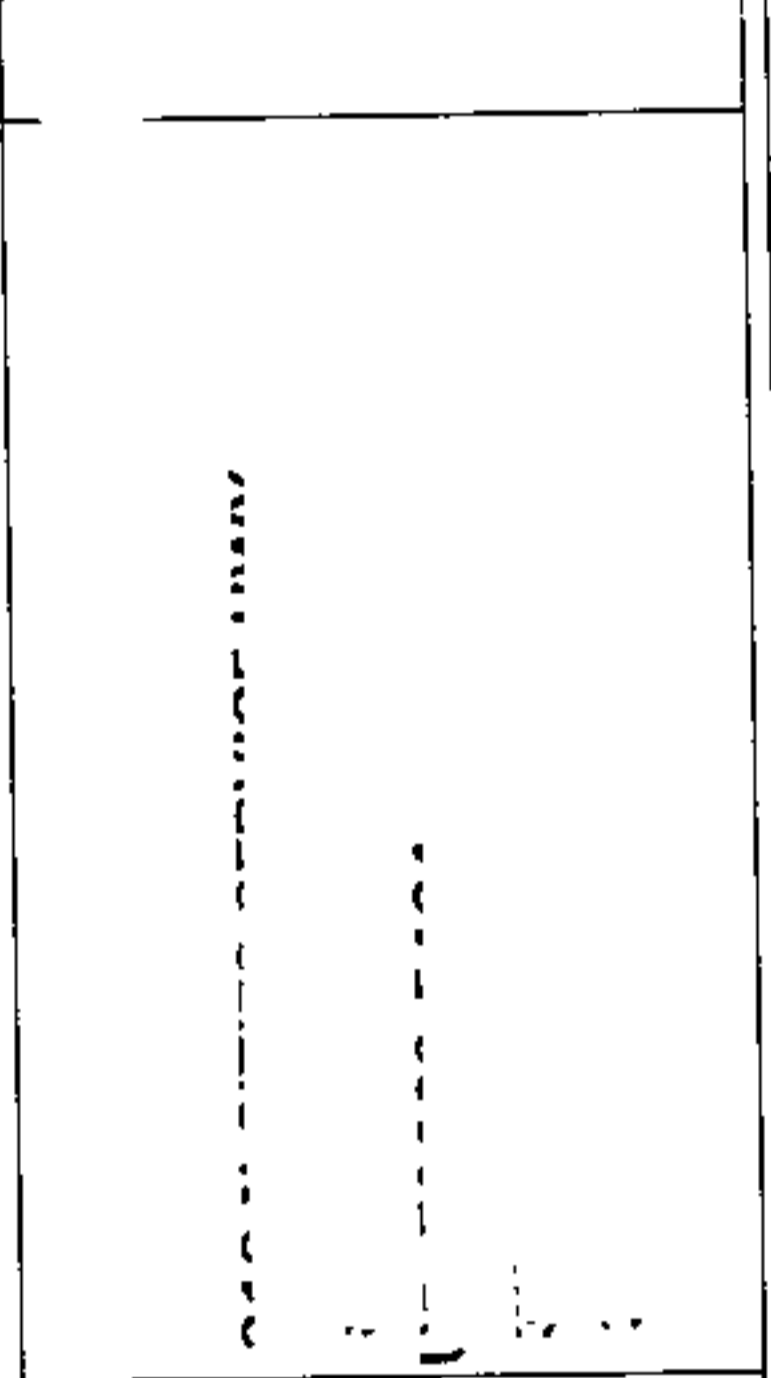
**CERTIFIED MILL TEST REPORT**  
For additional copies call  
800-227-6489

We hereby certify that the test results presented here  
are accurate and conform to the reported grade specification

*Drew M Fischer*  
Drew M Fischer  
Quality Assurance Manager

**1SERIES-BPS**

HEAT NO.: 3121041	Delivery#: 85425742
SECTION: ANG 2 X 2x1/4 20'0" A36/52950	BOL#: 75368996
GRADE: ASTM A36-19/A529-14 Gr 50	CUST PO#: P0241574-01
ROLL DATE: 03/22/2023	CUST P/N:
MELT DATE: 03/05/2023	DLVRY LBS / HEAT: 9314.000 LB
Cert. No.: 85425742 / 121041A113	DLVRY PCS / HEAT: 146 EA



Characteristic	Value	Characteristic	Value	Characteristic	Value
C	0.10%	Tensile Strength test 2	76.2ksi	The Following is true of the material represented by this MTR: *Material is fully killed and is Hot Rolled Steel *100% melted, rolled, and manufactured in the USA *EN10204:2004 3.1 compliant *Contains no weld repair *Contains no Mercury contamination *Manufactured in accordance with the latest version of the plant quality manual *Meets the "Buy America" requirements of 23 CFR635.410, 49 CFR 661 *Warning: This product can expose you to chemicals which are known to the State of California to cause cancer, birth defects or other reproductive harm. For more information go to www.P65Warnings.ca.gov	
Mn	1.05%	Elongation test 2	27%		
P	0.011%	Elongation Gage Lgth test 2	8IN		
S	0.045%				
Si	0.21%				
Cu	0.32%				
Cr	0.08%				
Ni	0.11%				
Mo	0.038%				
V	0.000%				
Cb	0.011%				
Sn	0.009%				
Al	0.000%				
Carbon Eq A529	0.36%				
Yield Strength test 1	54.8ksi				
Tensile Strength test 1	76.0ksi				
Elongation test 1	30%				
Elongation Gage Lgth test 1	8IN				
Yield Strength test 2	54.6ksi				

REMARKS : ALSO MEETS ASTM GRADE A36, A529-50, A572-50, A709-36, A709-50, A992, AASHTO M270-36, M270-50, CSA G40.21-04 44W, 50W